

WEBINAR

26 February, 15:00 - 16:00 CET

Discovering the unexplored deep marine environment

Speakers

 **Paschal Coyle**
(CPPM)

 **Gwenhael de Wasseige**
(APC)

 **Remy Le Breton**
(APC)

 **Severine Martini**
(MIO)

 **Herve Glotin**
(CNRS)

REGISTER NOW!



REINFORCE

REsearch INfrastructures FOR Citizens in Europe



Follow Us



reinforceeu.eu



- 15:00 - 15:10: Welcome and introduction - Paschal Coyle,
Centre de Physique des Particules de Marseille, Marseille
- 15:10 - 15:20: Neutrinos and KM3NeT - Gwenhael de Wasseige,
Laboratory for Astroparticle Physics and Cosmology, Paris
- 15:20 - 15:30: Bioluminescence - Severine Martini,
Mediterranean Institute of Oceanography, Marseille
- 15:30 - 15:40: Submarine Intelligent Listening into KM3NeT & Abyss - Herve Glotin,
Computer Science & Systems Laboratory, Toulon University
- 15:40 - 15:50: Deep Sea Hunters on Zooniverse - Remy Le Breton,
Laboratory for Astroparticle Physics and Cosmology, Paris
- 15:50 - 16:00: Q&A and wrap-up



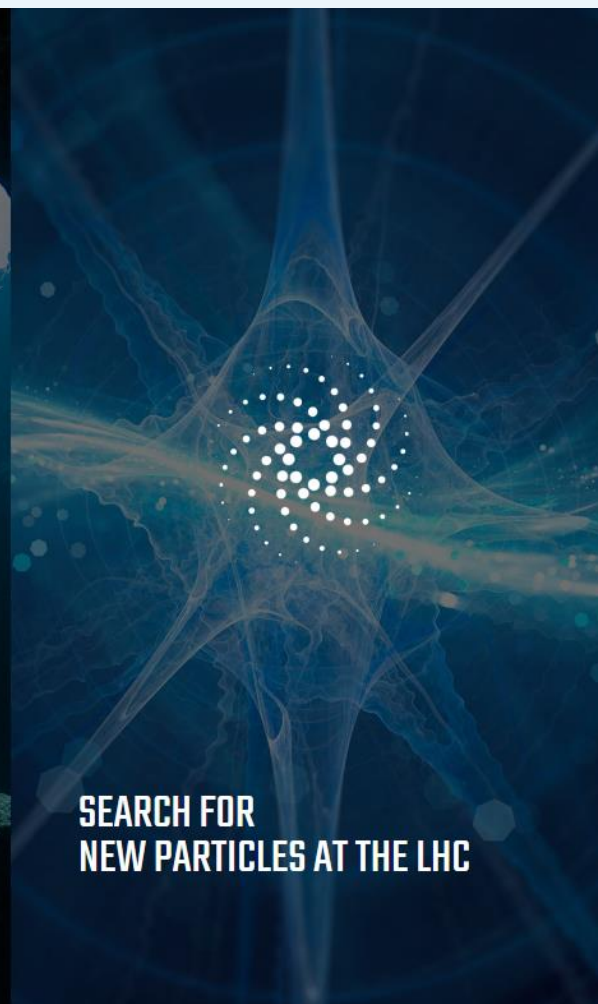
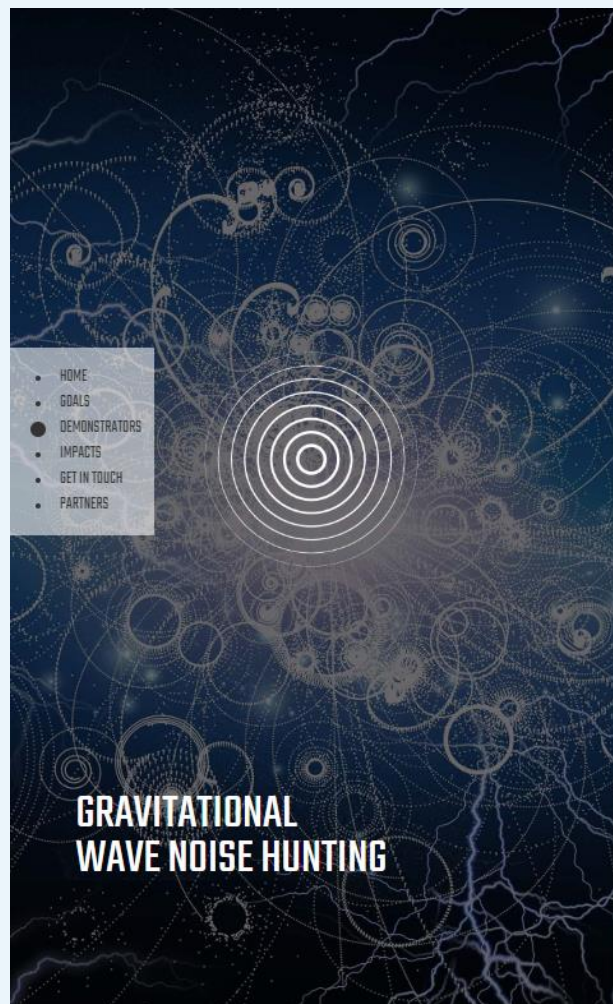
Develop

- ❖ Interdisciplinary scientific knowledge with the support of citizens in a two way process. Associate research on “fundamental science” with environmental concerns
- ❖ Multi-sensorial “multi-messenger” understanding of the cosmos. Go beyond the Visual
- ❖ Inclusion and diversity. Treat gender issues. Extend participation to visually impaired, confined, seniors
- ❖ Critical thinking in a world of increased digital connectivity. Effectively separate signal from background noise, formulate hypotheses, estimate proper biases, manage uncertainty, collective thinking versus herd thinking,...
- ❖ Paths traversing traditional frontiers of the modes of apprehension of reality. E.g. the cognitive and the affective: Art and Science



REINFORCE
REsearch INFrastructures FOR Citizens in Europe

Demonstrators

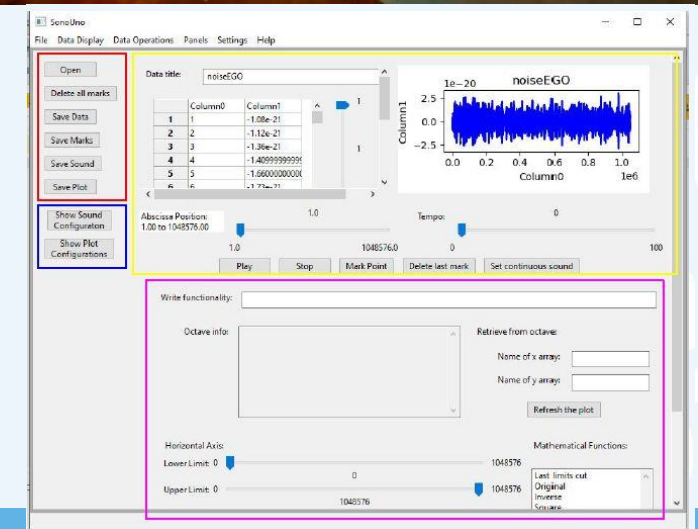
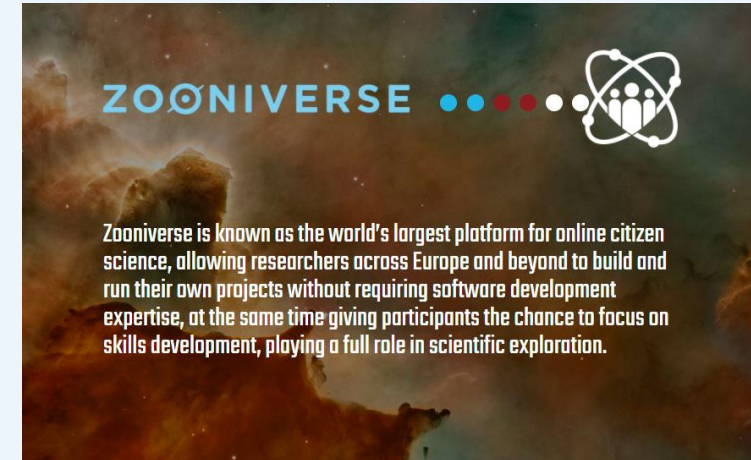


METHODOLOGY:

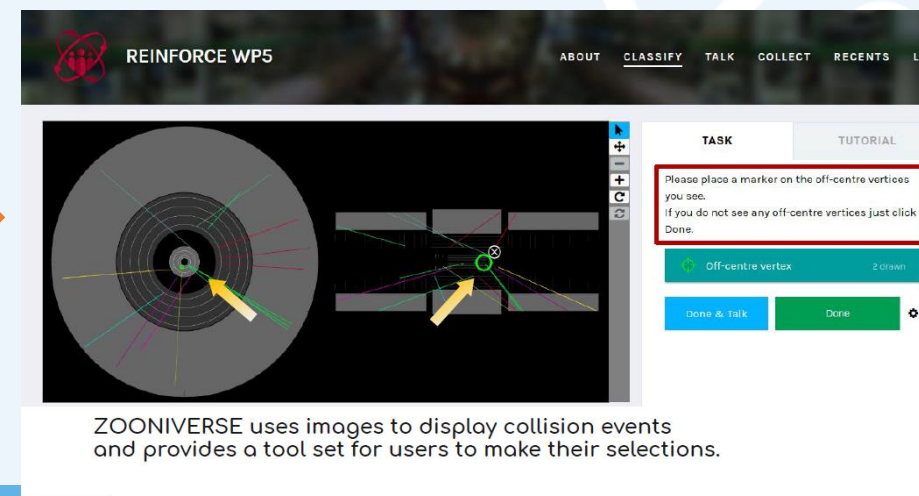
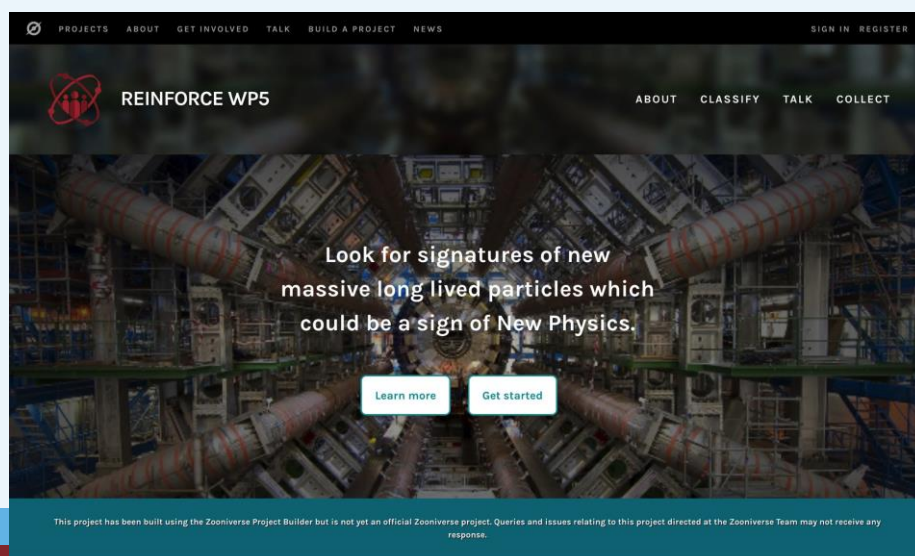
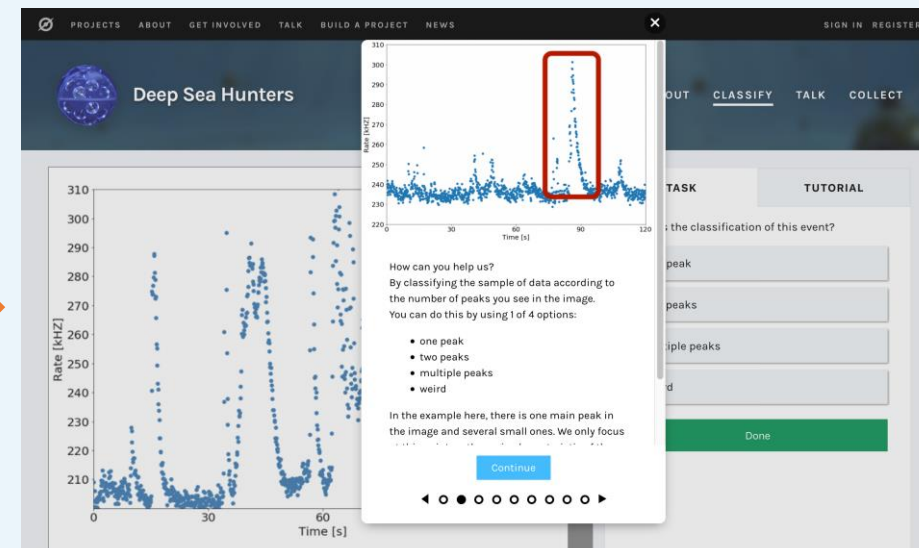
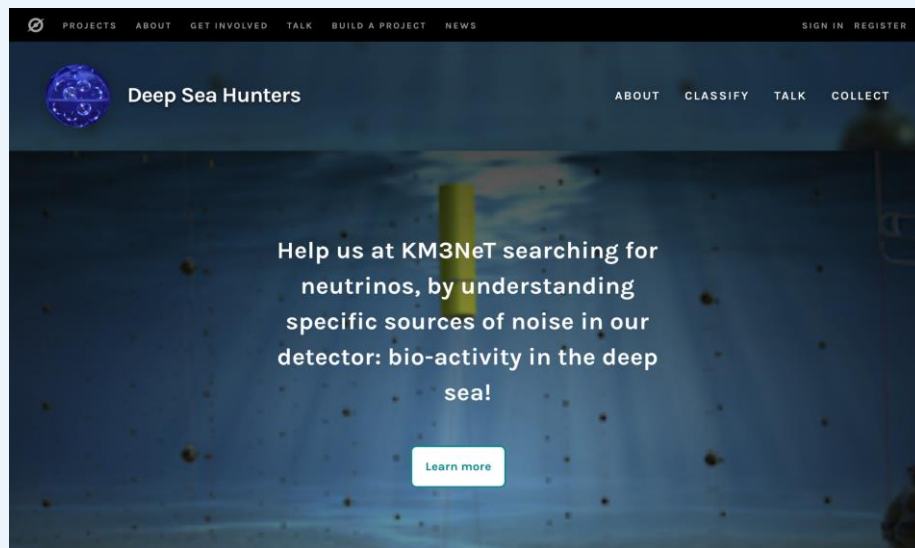
- 🔬 Engage citizens in frontier research
- 🔬 Develop Large Scale Citizen Science Demonstrators
- 🔬 Implement a participatory engagement design
- 🔬 Develop a Policy Roadmap

TOOLS:

- 🔬 Use a common platform Zooniverse (Citizen Science Platform with more than 1,000,000 volunteers)
- 🔬 New sonification software (SonoUno)



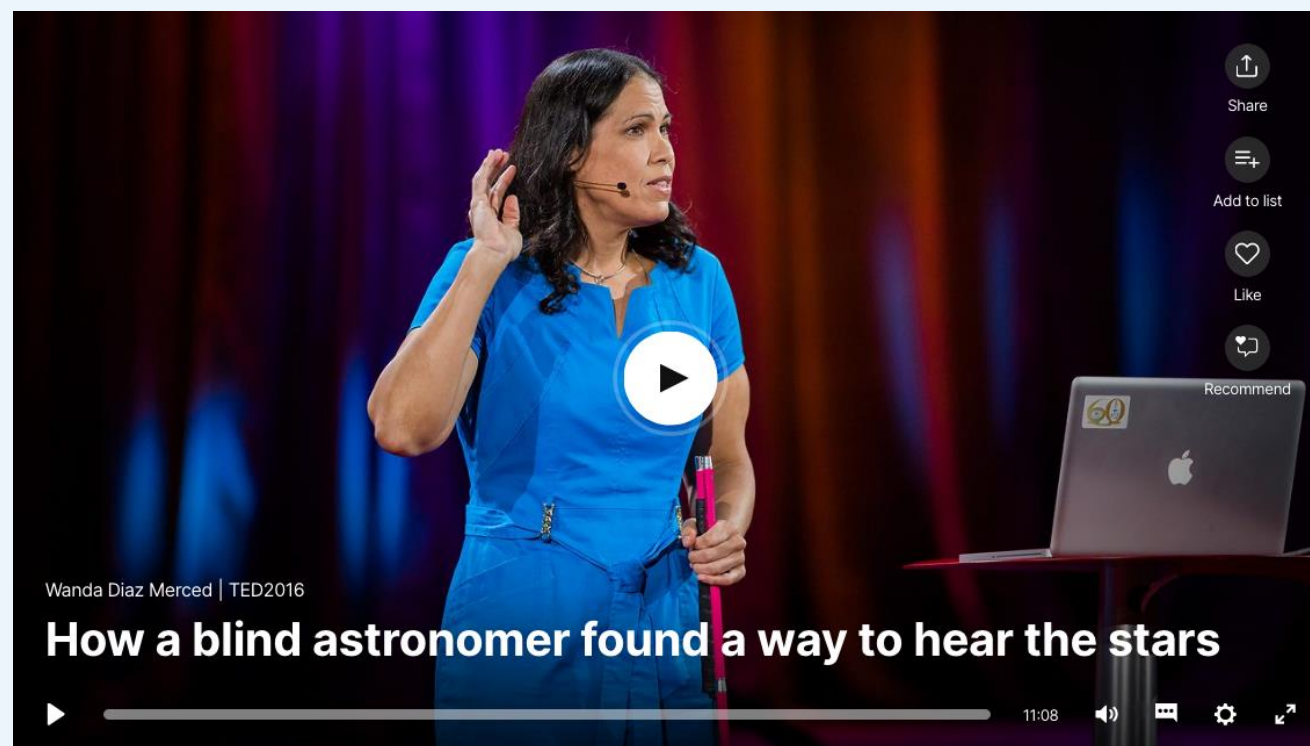
A common platform: Zooniverse





An important tool: Sonification

- ❏ Not only increasing inclusion, also increasing the researchers discrimination power of signal over background through the use of sound





REINFORCE

REsearch INfrastructures FOR Citizens in Europe

Coming soon, our next webinar:
"Search For New Particles At The LHC"



www.reinforceeu.eu



company/reinforceeu



[@ReinforceEU](https://twitter.com/ReinforceEU)

