



REINFORCE

REsearch INfrastructures FOR Citizens in Europe

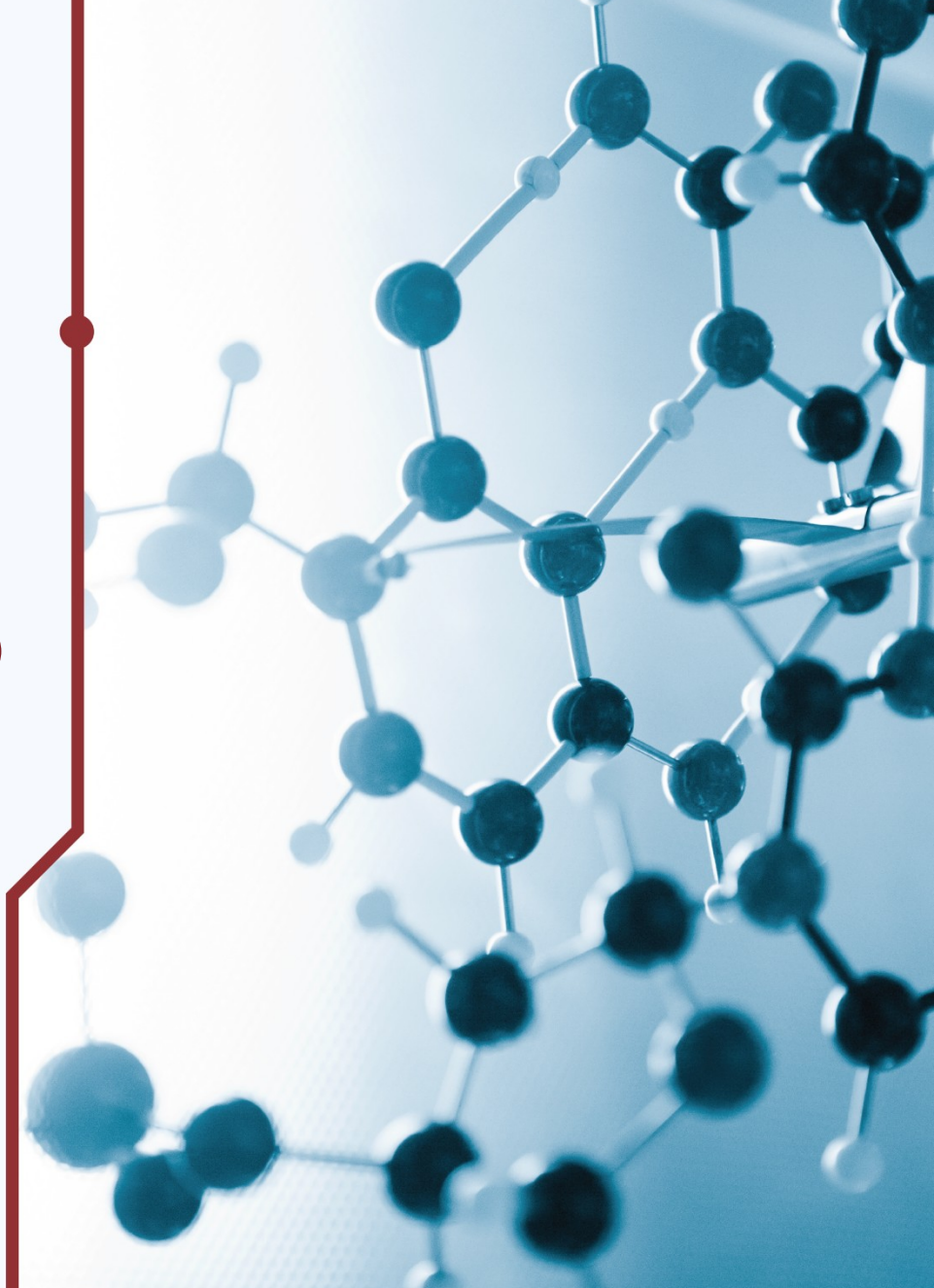
REINFORCE

**(Research Infrastructures FOR Citizens in Europe)
1 December 2019 - 1 December 2022**

Gary Hemming

European Gravitational Observatory

REINFORCE Technical Manager

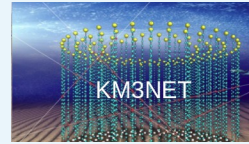


 **What is REINFORCE?**

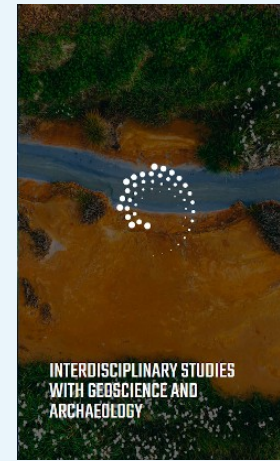
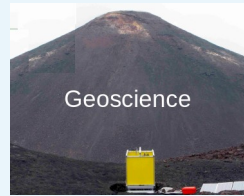
 **What are the project goals?**

 **How will they be reached?**

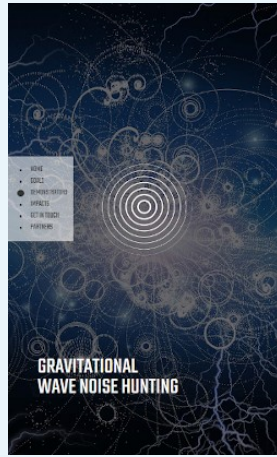
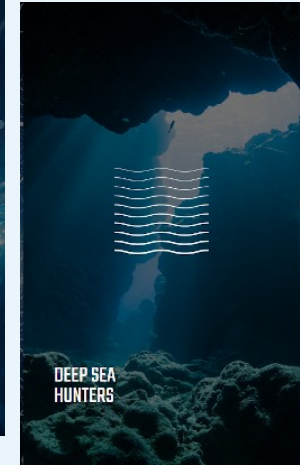
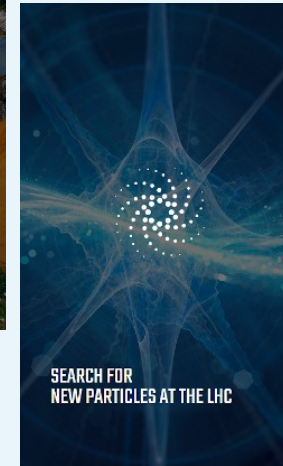





Infrastructures



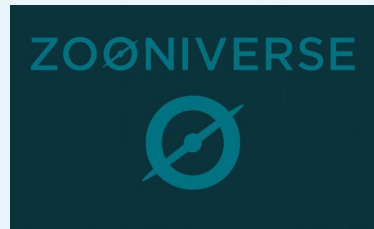

Demonstrators




Tools



pypi.org/project/sonoUno/



zooniverse.org

